

■ ЭЛЕКТРОННЫЙ БЛОК УПРАВЛЕНИЯ ЯЧЕЙКОЙ

Электронные депозитные ячейки имеют ту же конструкцию и размер, что и механические ячейки. Wertheim предлагает электронный блок управления депозитными ячейками, который отвечает задачам организации аренды ячеек, техническим требованиям и обеспечивает безопасность.

Стандарт

Устройство блокировки: Каждая ячейка оборудована двойным замком.

Один клиентский замок для каждого ящика
и один электронный удаленно управляемый банковский замок.

Замок:

Цилиндрический замок депозитной ячейки
и электронный удаленно управляемый банковский замок (SSE 120).

Ключ:

стандартный цилиндровый замок (механический или электронный)
и электронный удаленно управляемый банковский замок.

Описание: Электронные компоненты устанавливаются на ячейки Wertheim monitors and operates the installation permanently. So it is possible for the bank institute to operate the bank lock by PC.

Материал: Алюминий.
Гравировка номеров ячеек.



Преимущества электронного замка депозитной ячейки SSE 120

Exchange: The customer lock can be easily replaced by a new cylindrical lock.

Locking change: The replacement of the customer lock is done without dismantling the complete lock. Bank lock and electronics stay in function.

Emergency opening: This process is done without destroying the lock.

Locking system: The customer cylinder could be sold to the safe box renter or the renter supplies a fitting cylinder of his locking system. Therefore the key bail, the administration and the key registration can be cancelled. The bank emergency lock can be integrated in the locking system of the bank.

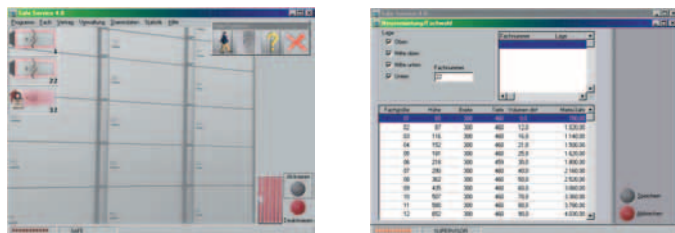
Variety: The standardized profile allows the use of different products and systems as e.g. cylindrical, magnetic or turn keys.

Economic efficiency: The independence from the lock producers offers deciding price advantages.

Innovation: We are sure, that the million times used profile lock is the basis for further worldwide developments and therefore the Wertheim-lock can be seen as a future oriented investment.

■ SAFE-SERVICE

Safe-Service is the PC software to administrate safe deposit boxes in a comfortable way. The box rental is performed in logic steps and allows the print out of rental contracts and invoices. Even the administration of key deposits, statistic calculations and all other necessities of a convenient administration software are considered. Safe-Service can be used as stand-alone system or in connection with the electronic safe deposit box control unit as remote control and monitor unit.



Administration software „Safe-Service“

General features

The management program „Safe-Service 5.0 Full version“ includes all the functions featured in the full versions 3.0, 3.5 and 4.0 such as:

- Customer data management incl. automatic document printout (Rental contract, safe authorisation, initial invoice, sample signature form)
- Master data management
- Automatic debiting for direct debit customers
- Follow-up invoices
- Reminder and dunning facility
- Logging of all customer rental safe deposit boxes data (Access, contract extensions, termination etc.)
- Broad range of statistical functions
- Electronic record of signatures (Scanner required)
- Scannen and display of graphic data from the identification documents possible (Scanner required)
- Automatic follow-up invoices and dunning correspondence incl. automatic debiting for direct debit customers using new Edifact V3 format media (International financial transaction standard)
- Customer status menu item:
 - Total overview of all safe deposit boxes incl. detailed information invoicing data and customers
- Dunning and reminder menu item:
 - Reminder letters with or without charges in addition to 3 payment requests
 - Printout of a list of all transactions for a specific safe deposit box possible
- Statistics menu item
 - Detailed and separate list of receipts from new customers, subsequent invoicing and termination of safe deposit boxes rental
- Multiple languages (optional)



New features

- Adapted to the new law position in Austria (change of the sales volume tax law)
 - Every invoice has a clear number
 - The ATU number of the bank is on every invoice
- Numerous sequences of operations with regard to the increase in productivity implemented
 - Simplified treatment of the follow-up invoice
 - Improved treatment of the supplementary insurance
 - Even better support of the business cases by new tenant categories such as: economic covenantee / fosterling
 - Detailed description of the system features
 - Open indication of the fingerprint quality
 - Even more detailed description of the statistics differentiate display of deposit box accesses in counters and self-service accesses
 - Display and printout of all available boxes
 - Display and printout of all issued keys, incl. distinction with or without security
 - Calculation of the total sum of all key securities
 - Printout of the state of the boxes possible
 - Moving of boxes possible
 - Specified to current requests
 - Recording of the IBAN number of the bank
 - Recording of the e-mail address of the clerk
 - Support of the MSSQL/MSDE Database
 - Improved network ability
 - Improved graphic interface
- support of new software drivers without problems

■ ТЕРМИНАЛЫ КОНТРОЛЯ ДОСТУПА

Wertheim uses fingerprint scanning devices or card reading devices (magnetic card, Legic or Mifare) for the self-service operation of safe deposit boxes, guaranteeing the highest level of security in controlling access when used in connection with Safe-Service user software for deposit box applications. Registering safe deposit box customers is fast, easy and requires no specialist knowledge.

Registered safe deposit box customers are identified in less than one second. Access is approved following successful identification by the system.

Контроль доступа: сканер отпечатков пальцев



Все инструкции на дисплее отображаются на соответствующем языке.

Контроль доступа: устройство чтения карт (магнитная карта, Legic или Mifare)

