

Depositing values.



© Wertheim 09/2008

Safe deposit boxes in safes

General information

Wertheim safes with safe deposit boxes are produced in five different security levels, which are classified in the resistance-grades III, IV, IV KB, V and V KB. The quality has been tested by the laboratories VdS in Cologne, acknowledged all over Europe, according to the EURONORM EN1143-1 acknowledged by the CEA (Comité Européen des Assurances).

Safe deposit boxes

Wertheim safe deposit boxes in safes are fabricated in blocks. The different box sizes are optimally placed in the standard models. On request the placement of the box sizes can be chosen individually within the block height.

Locks of safe deposit boxes

The locks can be operated either manually or with an electronically controlled bank locking. The control unit monitors and operates the installation permanently. With „Safe-Addition“ it is possible to transform a classic mechanically-secured system into a state-of-the-art, passively monitored facility. For the administration and organisation of the rental of the boxes, Wertheim designed a software package named „Safe-Service“.

Surfaces of safe deposit boxes

The standard surfaces are natural aluminium. The box numbers are engraved. Coloured surfaces on request.

Service

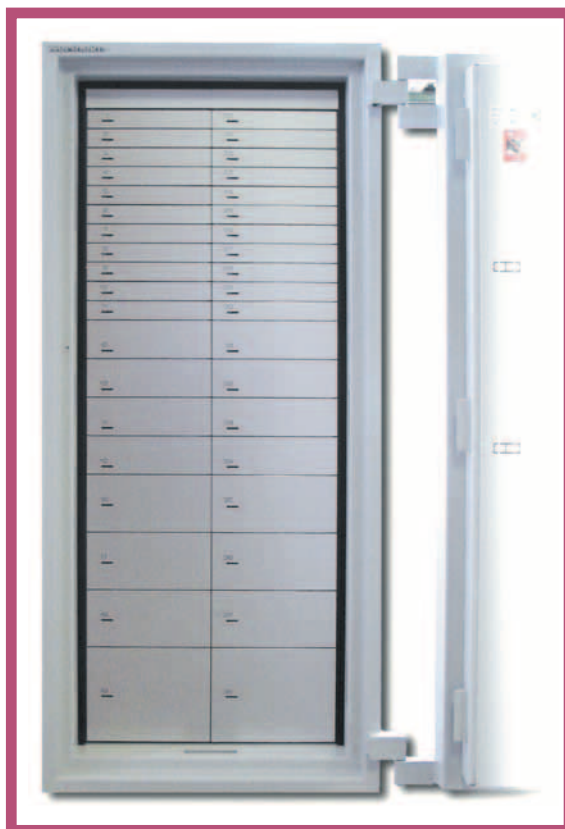
The Wertheim-service-hotline: ++43 (0)1 / 604 91 66 - 300 is manned around the clock, also on sundays and holidays. Wertheim offers competent information, short reaction time and well trained service technicians.

Guarantee

Wertheim guarantees a perfect function for the duration of 2 years (except electronic equipment). If the product should show a defect within this time, this is cleared free of charge.

SAFE DEPOSIT BOXES IN SAFES

■ Safe deposit boxes	Page 4
■ Safes	Page 6
■ Electronic safe deposit box control unit	Page 9
■ Administration	Page 10
■ Access control	Page 11



■ SAFE DEPOSIT BOXES IN SAFES

Standard

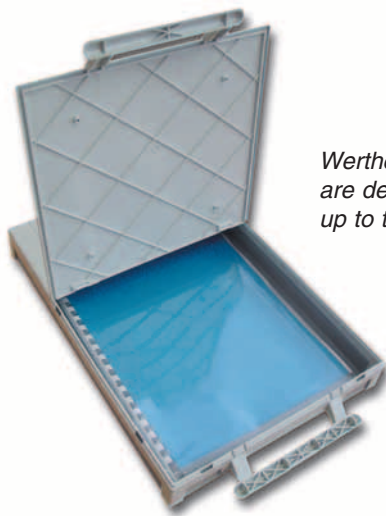
Locking device: Each box has a double lock.

There is one bank lock (control lock) equal for the whole installation and one customer lock for each of the box doors.

Lock: Magnetic lock or cylindric lock (mechanical / electronic).

Key: For each installation 2 bank keys and 2 customer keys for each safe box.

Surface: Natural aluminium.
Box numbers are engraved.



Wertheim safe cassettes are designed to cover folders and envelopes up to the size DIN C4!



Safe DWS 1902 S KB with 2 inside lockers and 48 safe deposit boxes

■ SAFES FOR SAFE DEPOSIT BOX INSTALLATION

Safes for safe deposit box installation have been tested by the VdS according to the EURONORM EN1143-1 (Insurance class and -sum see page 7). Opening the safe door 90° is sufficient to get full access to the boxes. All types are prepared for alarm connection.

Standard colour: inside RAL 7035 light grey,
 outside two-coloured RAL 7035 light grey and RAL 7045 telegrey1

Safes CWS									
Type	Hinge	Weight (appr. kg)**	Volume (l)	Outside dimensions (mm)*			Inside dimensions (mm)		
				hoch	width	depth	hoch	width	depth
CWS 1600 S	right or left	1356	440	1538	810	725	1385	660	480
CWS 1901 S	right or left	1640	550	1883	810	725	1730	660	480
CWS 1903 S	right or left	2030	800	1883	1110	725	1730	960	480
CWS 1902 S	2-winged	2070	800	1883	1110	725	1730	960	480
CWS 1904 S	2-winged	2480	1050	1883	1415	725	1730	1265	480

Safes DWS									
Type	Hinge	Weight (appr. kg)**	Volume (l)	Outside dimensions (mm)*			Inside dimensions (mm)		
				hoch	width	depth	hoch	width	depth
DWS 1600 S	right or left	1405	440	1538	810	725	1385	660	480
DWS 1901 S	right or left	1680	550	1883	810	725	1730	660	480
DWS 1903 S	right or left	2090	800	1883	1110	725	1730	960	480
DWS 1902 S	2-winged	2130	800	1883	1110	725	1730	960	480
DWS 1904 S	2-winged	2550	1050	1883	1415	725	1730	1265	480

Safes DWS KB									
Type	Hinge	Weight (appr. kg)**	Volume (l)	Outside dimensions (mm)*			Inside dimensions (mm)		
				hoch	width	depth	hoch	width	depth
DWS 1600 S KB	right or left	1405	440	1538	810	725	1385	660	480
DWS 1901 S KB	right or left	1680	550	1883	810	725	1730	660	480
DWS 1903 S KB	right or left	2090	800	1883	1110	725	1730	960	480
DWS 1902 S KB	2-winged	2130	800	1883	1110	725	1730	960	480
DWS 1904 S KB	2-winged	2550	1050	1883	1415	725	1730	1265	480

Safes EWS									
Type	Hinge	Weight (appr. kg)**	Volume (l)	Outside dimensions (mm)*			Inside dimensions (mm)		
				hoch	width	depth	hoch	width	depth
EWS 1600 S	right or left	1505	440	1538	810	725	1385	660	480
EWS 1901 S	right or left	1790	550	1883	810	725	1730	660	480
EWS 1903 S	right or left	2230	800	1883	1110	725	1730	960	480
EWS 1902 S	2-winged	2270	800	1883	1110	725	1730	960	480
EWS 1904 S	2-winged	2720	1050	1883	1415	725	1730	1265	480

Safes EWS KB									
Type	Hinge	Weight (appr. kg)**	Volume (l)	Outside dimensions (mm)*			Inside dimensions (mm)		
				hoch	width	depth	hoch	width	depth
EWS 1600 S KB	right or left	1505	440	1538	810	725	1385	660	480
EWS 1901 S KB	right or left	1790	550	1883	810	725	1730	660	480
EWS 1903 S KB	right or left	2230	800	1883	1110	725	1730	960	480
EWS 1902 S KB	2-winged	2270	800	1883	1110	725	1730	960	480
EWS 1904 S KB	2-winged	2720	1050	1883	1415	725	1730	1265	480

** Weight without safe deposit box blocks
KB = core drill protection

* Please include to the shown outside width (1-winged) 55 mm for hinges!
Please include to the shown outside width (2-winged) 110 mm for hinges!
Please include to the shown outside depth 60 mm for mountings!

TYPES | INSURANCE CLASS | INSURANCE SUM

Type	Name	VdS grade ECBS res.grade	sec.class VSÖ-VVO	trade (without AC) insurance up to	trade (with AC) insurance up to
CWS	Safe	III	EN 3	EUR 100.000,-	EUR 200.000,-
DWS	Safe	IV	EN 4	EUR 150.000,-	EUR 300.000,-
DWS KB	Safe	IV KB	EN 5	EUR 250.000,-	EUR 500.000,-
EWS	Safe	V	EN 5	EUR 250.000,-	EUR 500.000,-
EWS KB	Safe	V KB	EN 6	EUR 375.000,-	EUR 750.000,-

Locks

DB-Lock / S & G / adjustable
 Keyset / 2 DB-keys / 186 mm
 NC-Lock / La Gard / 3 wheels
 EL-Lock / Mauer / Code Combi B
 EL-Lock / Paxos / STC 10 with keypad
 EL-Lock / Paxos / STC 10 with keypad + STC 50
 CWS: EL-Lock / La Gard / Combogard 33 E

Accessoires

Inside locker, 360 mm high, 2-winged
 2 Inside lockers, 360 mm high, 1-winged

Minimum locking equipment: CWS: 1 x DB-Lock / S & G / adjustable

Minimum locking equipment: DWS, DWS KB, EWS, EWS KB: 2 x DB-Lock / S & G / adjustable

LOCKS



DB-Lock / S & G



NC-Lock / La Gard



EL-Lock / Mauer



EL-Lock / Paxos



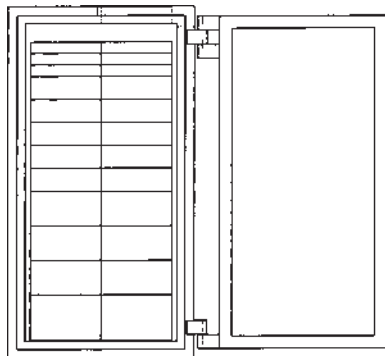
EL-Lock / La Gard



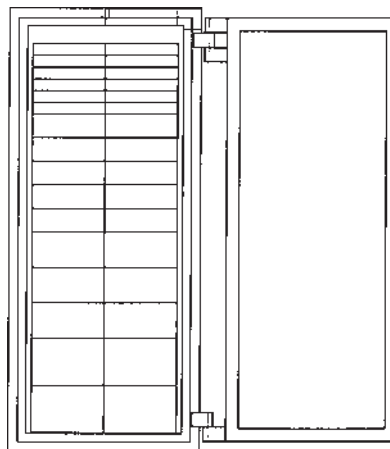
DWS 1902 S KB
 with electronic lock Paxos double



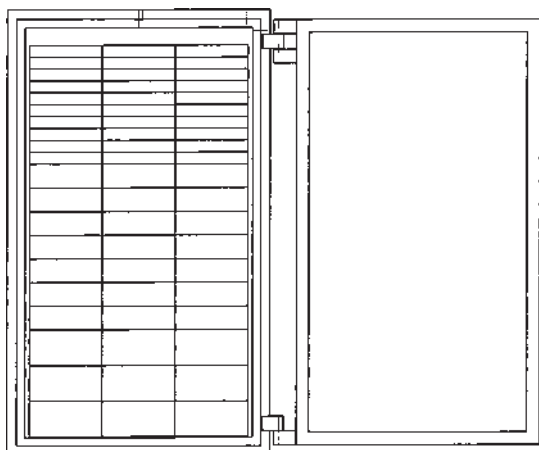
■ EXAMPLES



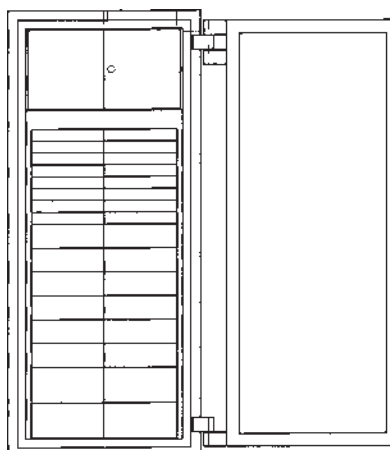
*Safe type 1600
with 24 safe deposit boxes (2 x LSN 0012)*



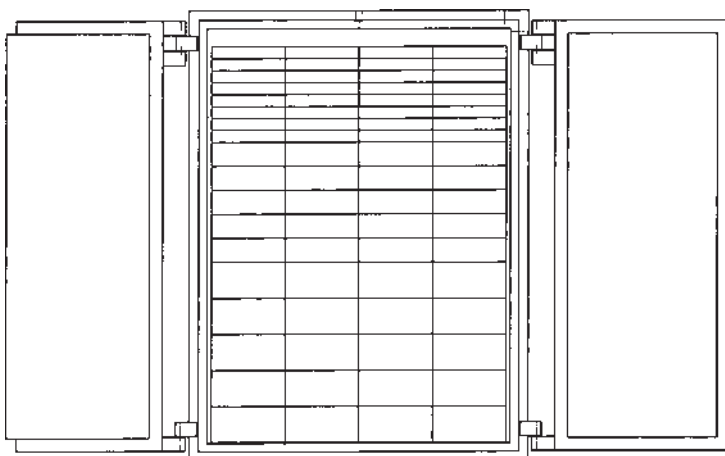
*Safe type 1901
with 32 safe deposit boxes (2 x LSH 0016)*



*Safe type 1903
with 60 safe deposit boxes (3 x LSH 0020)*



*Safe type 1901
with 32 safe deposit boxes (2 x LSN 0016)
and inside locker*



*Safe type 1904
with 72 safe deposit boxes (4 x LSH 0018)*

■ ELECTRONIC SAFE DEPOSIT BOX CONTROL UNIT

Electronic safe deposit boxes are produced in same design and size like mechanical boxes. Wertheim offers with the electronic safe deposit box control unit a complete package for the rental of safe deposit boxes, which satisfies all technical and security demands.

Standard

Locking device:	Each box has a double lock. One customer lock for each box door and one electronically remote controlled bank lock.
Lock:	Deposit box lock with cylinder and electronically remote controlled bank lock (SSE 120).
Key:	For each installation 2 bank keys (mechanical emergency lock) and 2 customer keys for each safe box.
Control unit:	The electronic components, designed by Wertheim, monitors and operates the installation permanently. So it is possible for the bank institute to operate the bank lock by PC.
Surface:	Natural aluminium. Box numbers are engraved.



The advantages of the safe deposit box lock SSE 120

Exchange: The customer lock can be easily replaced by a new cylindric lock.

Locking change: The replacement of the customer lock is done without dismantling the complete lock. Bank lock and electronics stay in function.

Emergency opening: This process is done without destroying the lock.

Locking system: The customer cylinder could be sold to the safe box renter or the renter supplies a fitting cylinder of his locking system. Therefore the key bail, the administration and the key registration can be cancelled. The bank emergency lock can be integrated in the locking system of the bank.

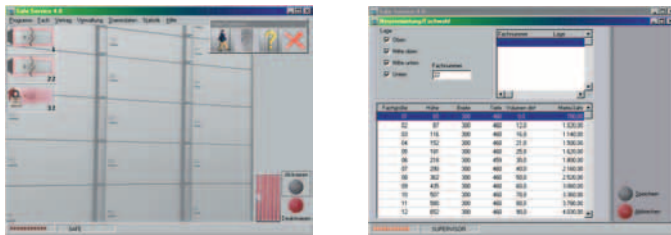
Variety: The standardized profil allows the use of different products and systems as e.g. cylindric, magnetic or turn keys.

Economic efficiency: The independence from the lock producers offers deciding price advantages.

Innovation: We are sure, that the million times used profil lock is the basis for further worldwide developments and therefore the Wertheim-lock can be seen as a future oriented investment.

■ SAFE-SERVICE

Safe-Service is the PC software to administrate safe deposit boxes in a comfortable way. The box rental is performed in logic steps and allows the print out of rental contracts and invoices. Even the administration of key deposits, statistic calculations and all other necessities of a convenient administration software are considered. Safe-Service can be used as stand alone system or in connection with the electronic safe deposit box control unit as remote control and monitor unit.



Administration software „Safe-Service“

General features

The management program „Safe-Service 5.0 Full version“ includes all the functions featured in the full versions 3.0, 3.5 and 4.0 such as:

- Customer data management incl. automatic document printout (Rental contract, safe authorisation, initial invoice, sample signature form)
- Master data management
- Automatic debiting for direct debit customers
- Follow-up invoices
- Reminder and dunning facility
- Logging of all customer rental safe deposit boxes data (Access, contract extensions, termination etc.)
- Broad range of statistical functions
- Electronic record of signatures (Scanner required)
- Scannen and display of graphic data from the identification documents possible (Scanner required)
- Automatic follow-up invoices and dunning correspondence incl. automatic debiting for direct debit customers using new Edifact V3 format media (International financial transaction standard)
- Customer status menu item:
 - Total overview of all safe deposit boxes incl. detailed information invoicing data and customers
- Dunning and reminder menu item:
 - Reminder letters with or without charges in addition to 3 payment requests
 - Printout of a list of all transactions for a specific safe deposit box possible
- Statistics menu item
 - Detailed and separate list of receipts from new customers, subsequent invoicing and termination of safe deposit boxes rental
- Multiple languages (optional)



New features

- Adapted to the new law position in Austria (change of the sales volume tax law)
 - Every invoice has a clear number
 - The ATU number of the bank is on every invoice
- Numerous sequences of operations with regard to the increase in productivity implemented
 - Simplified treatment of the follow-up invoice
 - Improved treatment of the supplementary insurance
 - Even better support of the business cases by new tenant categories such as: economic covenantee / fosterling
 - Detailed description of the system features
 - Open indication of the finger pattern quality
 - Even more detailed description of the statistics differentiate display of deposit box accesses in counters and self-service accesses
 - Display and printout of all available boxes
 - Display and printout of all issued keys, incl. distinction with or without security
 - Calculation of the total sum of all key securities
 - Printout of the state of the boxes possible
 - Moving of boxes possible
 - Specified to current requests
 - Recording of the IBAN numero of the bank
 - Recording of the e-mail address of the clerk
 - Support of the MSSQL/MSDE Data base
 - Improved network ability
 - Improved graphic interface
- support of new software drivers without problems

■ ACCESS CONTROL-TERMINALS

Wertheim uses fingerprint scanning devices or card reading devices (magnetic card, Legic or Mifare) for the self-service operation of safe deposit boxes, guaranteeing the highest level of security in controlling access when used in connection with Safe-Service user software for deposit box applications. Registering safe deposit box customers is fast, easy and requires no specialist knowledge.

Registered safe deposit box customers are identified in less than one second. Access is approved following successful identification by the system.

Access control Fingerprint-Terminal



All instructions on the displays are shown in the respective language.

Access control card reading device (magnetic card, Legic or Mifare)

